

Progress and status

OPERATIONS

- Reconnaissance barrier at 1177m
- Refuge chamber located at 1025m

FORENSICS

- Agency and Police planning for removal of Russell Smith's loader

PERSONNEL

- Weekly reviews of new roster trial (workforce and management)

HEALTH, SAFETY AND WELLBEING

- 743 days Lost Time Injury free

CHALLENGES

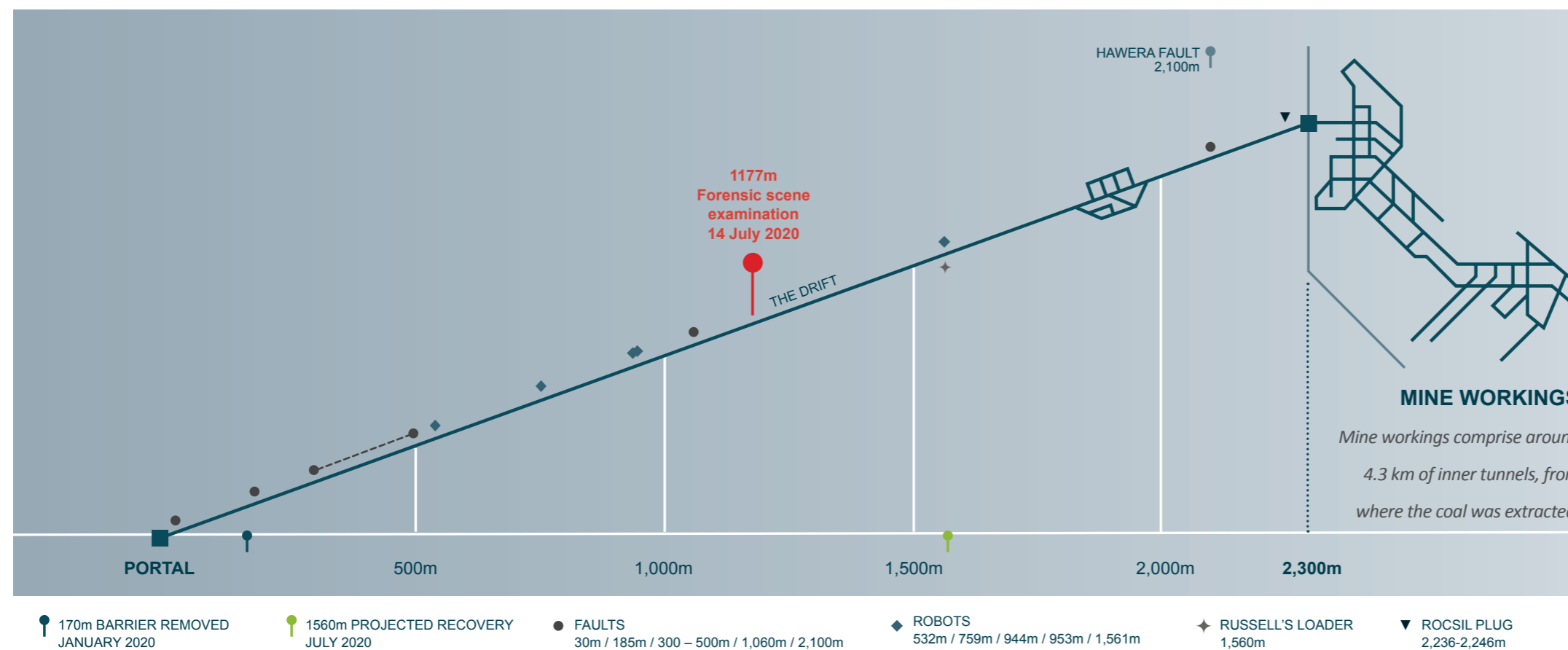
- If we encounter any unprescribed bolting before 1530m, it could affect the planned timeline for recovering Russell Smith's loader

CONTINUOUS IMPROVEMENTS

- 164 bolts installed between 1045m and 1080m over six shifts.

▲ Tracking ahead of time ● Tracking on time ■ Delayed due to COVID-19 lockdown

Drift recovery progress



Eleven
WorkSafe site visits year to date

1177m
Progress Reconnaissance barrier moved to 1177m

Robots
Recovered 532m, 759m, 944m and 953m

Sequence of events timeline

