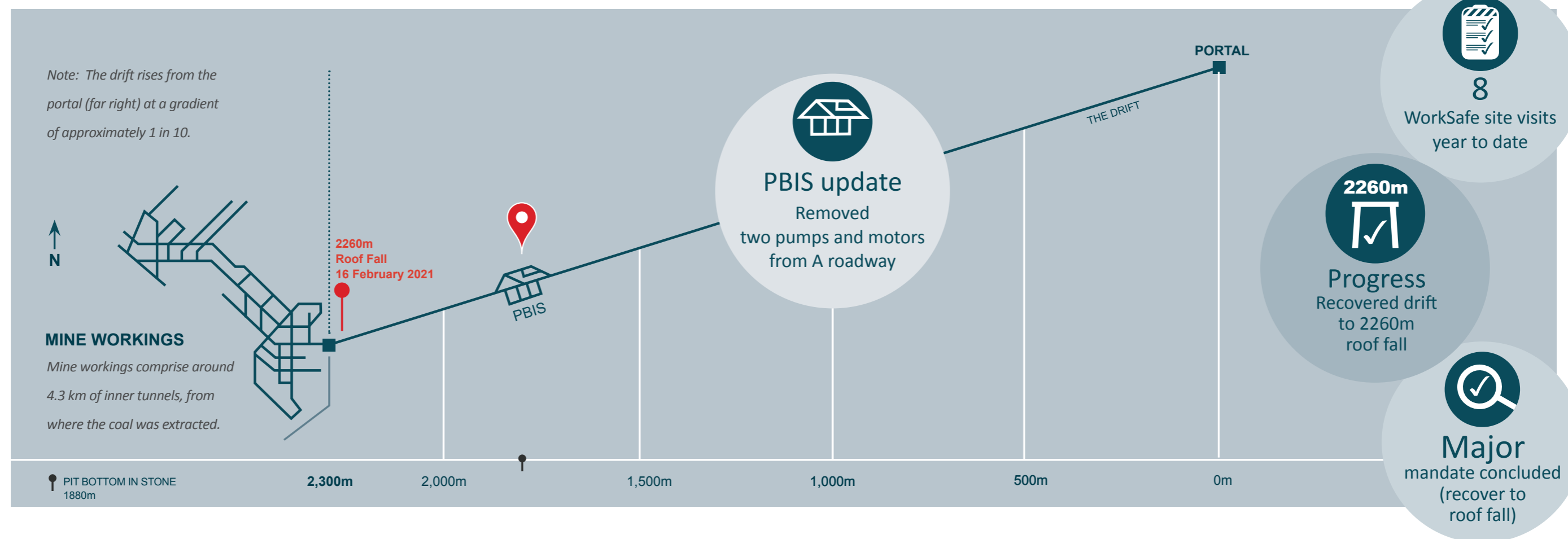


Progress and status

OPERATIONS	FORENSICS	PERSONNEL	HEALTH, SAFETY AND WELLBEING	CHALLENGES	CONTINUOUS IMPROVEMENTS
<ul style="list-style-type: none"> Recovery to roof fall at 2260m Began preliminary planning for final sealing and retreat from mine 	<ul style="list-style-type: none"> Variation to access arrangements for drilling submitted to DOC Forensics underway in A roadways 	<ul style="list-style-type: none"> Working through recruitment for one new mine worker 	<ul style="list-style-type: none"> Achieved all reportable Health and Safety targets for April 	<ul style="list-style-type: none"> Budget pressures 	

Roof fall recovery progress



Sequence of events timeline

