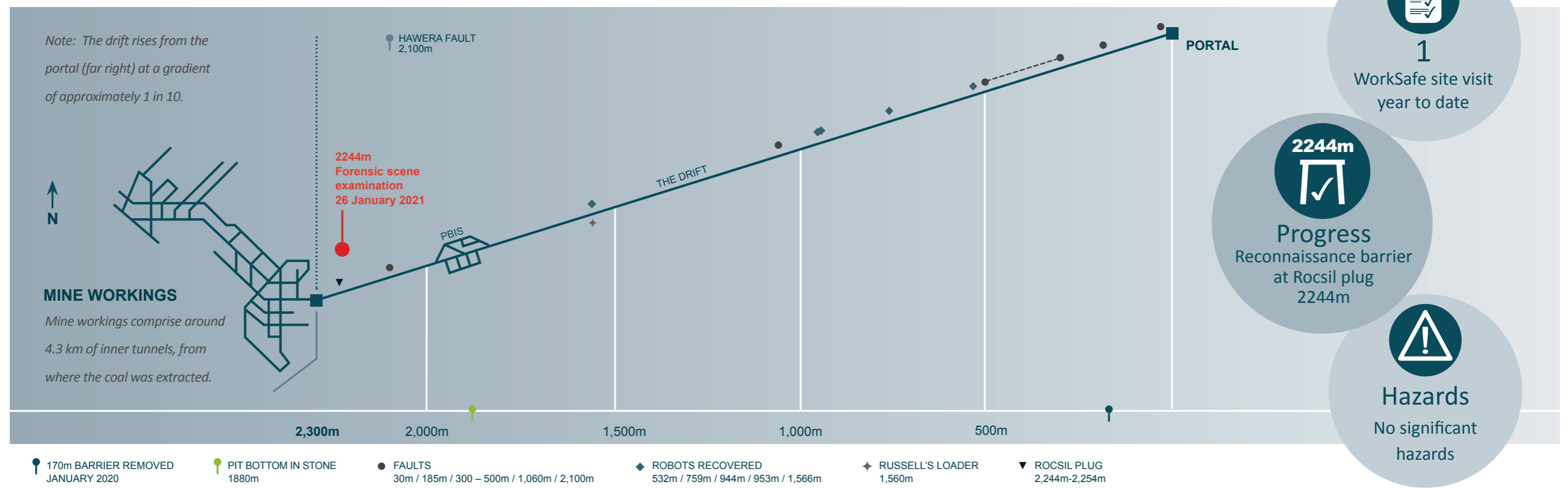


Progress and status

OPERATIONS	FORENSICS	PERSONNEL	HEALTH, SAFETY AND WELLBEING	CHALLENGES	CONTINUOUS IMPROVEMENTS
<ul style="list-style-type: none"> Reconnaissance barrier at 2244m Refuge chamber at 2080m Construction of VCD2 well underway 	<ul style="list-style-type: none"> No forensics over the last week 		<ul style="list-style-type: none"> Undertaking several Job Hazard Assessments for upcoming work 	<ul style="list-style-type: none"> Frequent lightning alerts forcing withdrawal of workers from underground 	

▲ Tracking ahead of time ● Tracking on time ■ Delayed

Drift recovery progress



Sequence of events timeline

