

Progress and status

OPERATIONS



- Reconnaissance barrier at Rocsil plug 2244m
- Refuge chamber at 2080m
- Additional LHD loader arrived on site
- Removal of conveyor boot end from grizzly

FORENSICS



PERSONNEL



- Single shift operations have commenced

HEALTH, SAFETY AND WELLBEING



- Training on standing roof support props while in BG4s
- JHA schedule for PBIS equipment removal has commenced

CHALLENGES



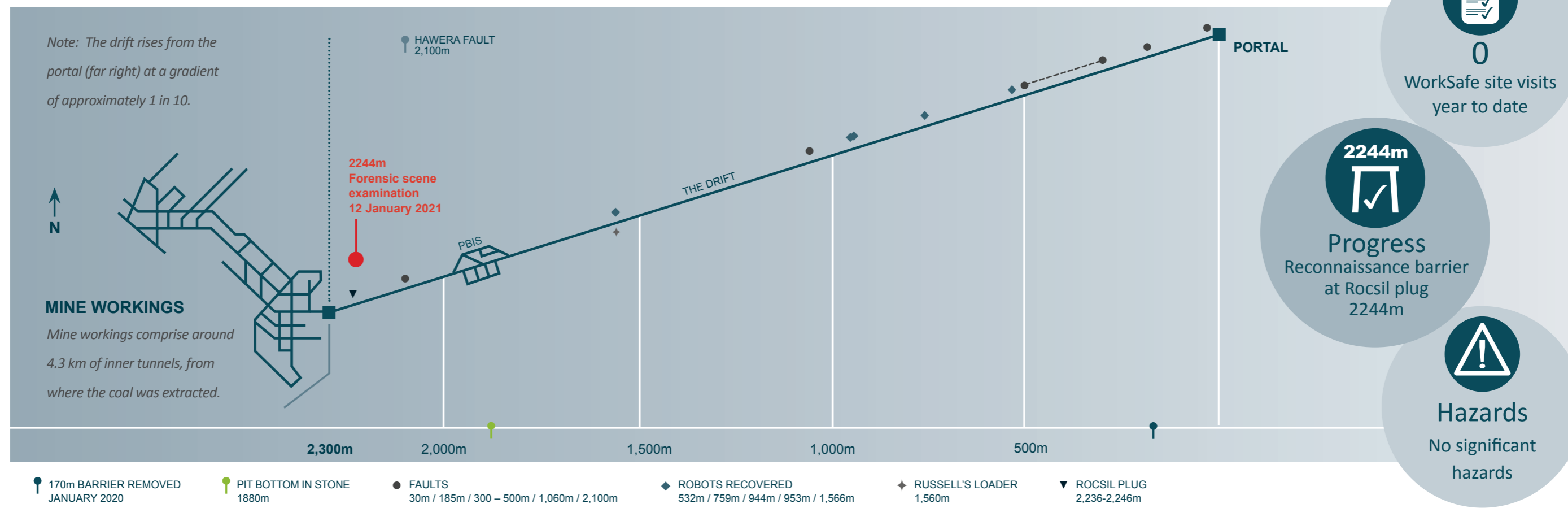
- Preparations for installing VCD2

CONTINUOUS IMPROVEMENTS



▲ Tracking ahead of time ● Tracking on time ■ Delayed

Drift recovery progress



Sequence of events timeline

