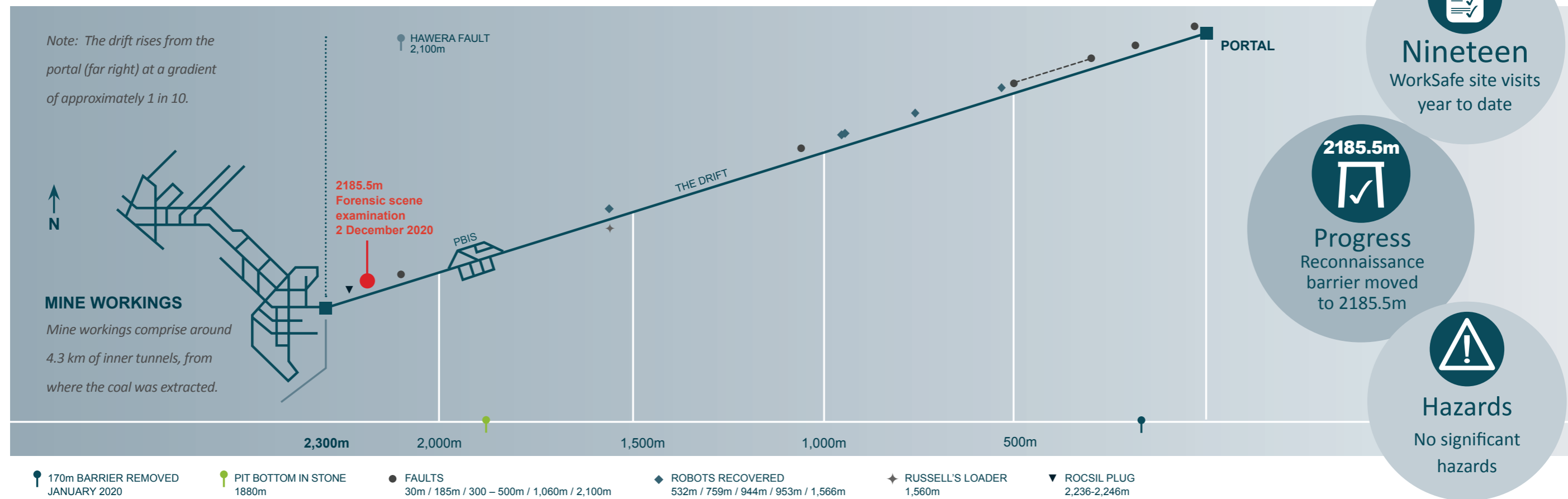


Progress and status

OPERATIONS	FORENSICS	PERSONNEL	HEALTH, SAFETY AND WELLBEING	CHALLENGES	CONTINUOUS IMPROVEMENTS
<ul style="list-style-type: none"> Reconnaissance barrier at 2185.5m Refuge chamber at 2008m Plan to bring second refuge chamber underground 	<ul style="list-style-type: none"> Continuing as per New Zealand Police Plan 	<ul style="list-style-type: none"> Workforce recruitment for 2021 underway – interviews scheduled for this week 	<ul style="list-style-type: none"> Continuing with weekly products of combustion sampling Underground audit completed by Minserv International last week 	<ul style="list-style-type: none"> Three weeks of bolting ahead 	

▲ Tracking ahead of time
 ● Tracking on time
 ■ Delayed

Drift recovery progress



Sequence of events timeline

