

### Progress and status

#### OPERATIONS



- Reconnaissance barrier at 2121m
- Refuge chamber at 2008m
- Megabolting as per prescribed support plan

#### FORENSICS



- Reconnaissance barrier advance has been reduced to maximum 6.5m in the coal measures

#### PERSONNEL



- No changes to report

#### HEALTH, SAFETY AND WELLBEING



- JHA on VCD2 installation
- Underground inspection by H&S and risk advisor

#### CHALLENGES



- Slower advance rates in coal measures

#### CONTINUOUS IMPROVEMENTS



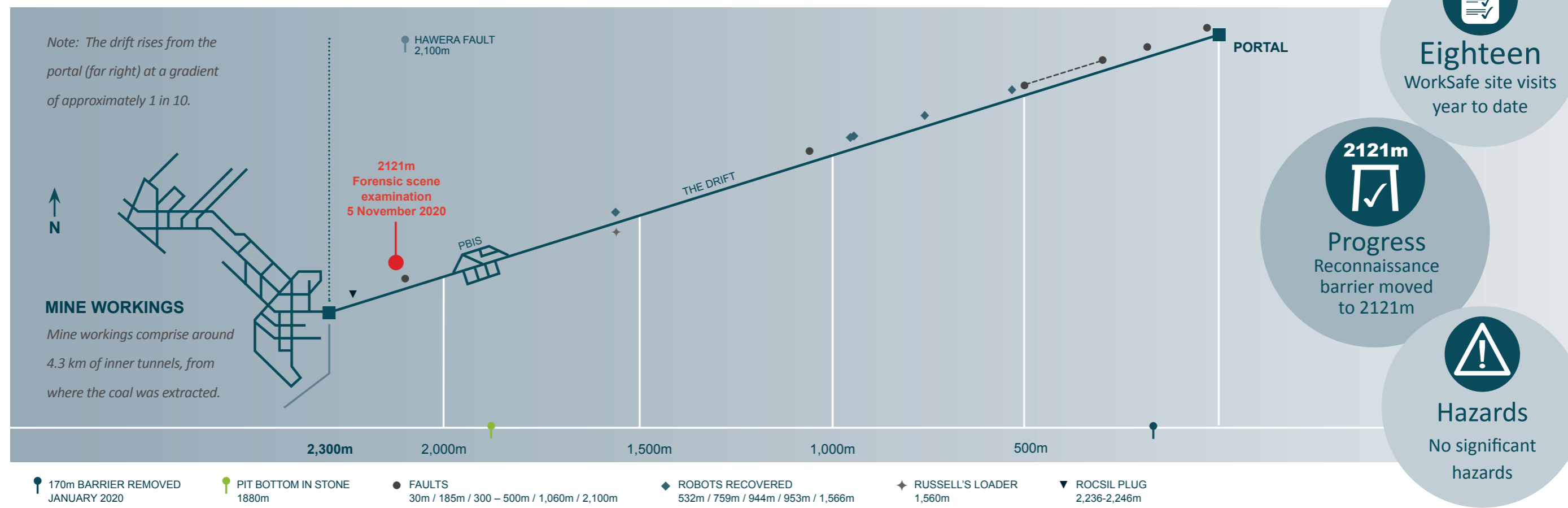
- Additional loader sourced for PBIS equipment retrieval

▲ Tracking ahead of time

● Tracking on time

■ Delayed

### Drift recovery progress



### Sequence of events timeline

