

Progress and status

OPERATIONS



- Reconnaissance barrier at 2089m
- Refuge chamber at 2008m

FORENSICS



- Have shortened the forensic zone back to max 6.5m, to work in with bolting requirements

PERSONNEL



- Two new employees commenced. Completed induction and are now on shift.

HEALTH, SAFETY AND WELLBEING



- Notifiable event due to tube bundle system leak. Realtime monitoring remained active. Mine evacuated while issue resolved

CHALLENGES



- Entering coal measures through the Hawera Fault, requiring 240 megabolts from 2085m to the plug

CONTINUOUS IMPROVEMENTS



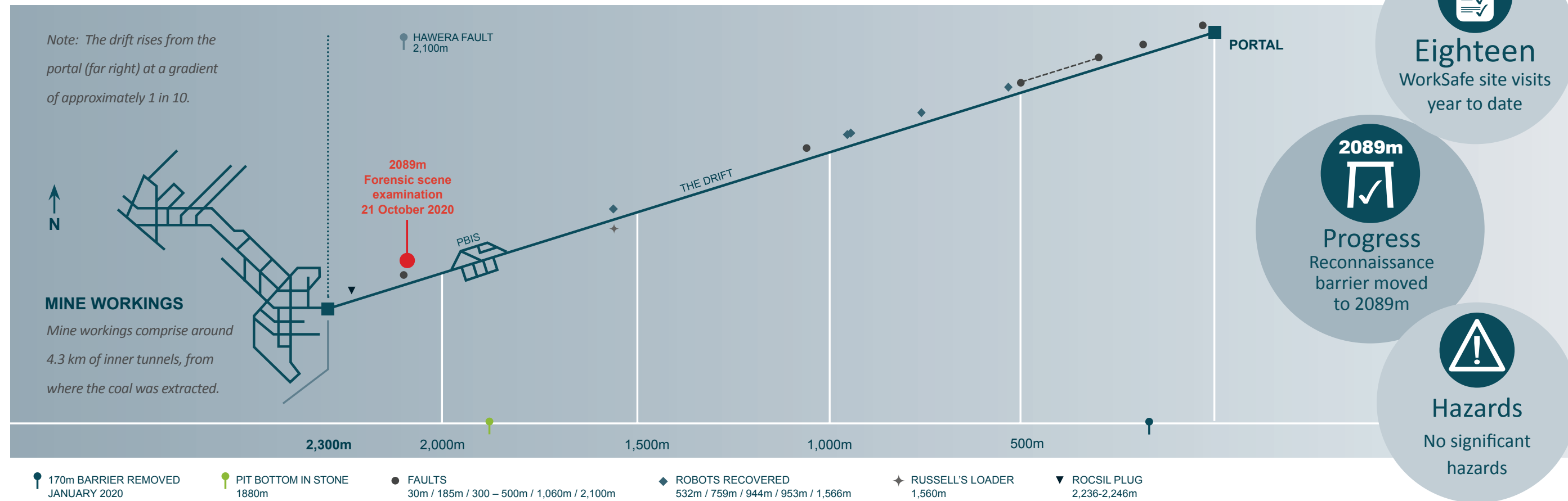
- Risk assessment review of products of combustion activities resulting in de-escalating respirator PPE to be activity based; all other PPE remains the same. Workforce trained in revised SOPs and PHMP.

▲ Tracking ahead of time

● Tracking on time

■ Delayed due to products of combustion found

Drift recovery progress



Sequence of events timeline

