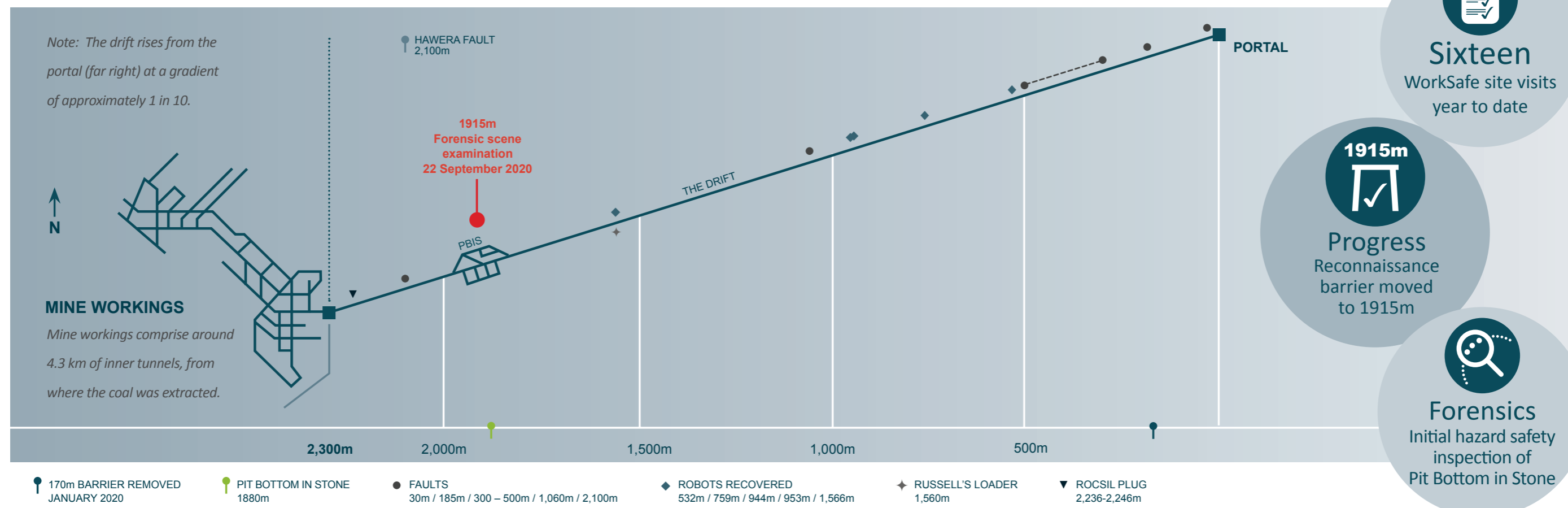


### Progress and status

OPERATIONS	FORENSICS	PERSONNEL	HEALTH, SAFETY AND WELLBEING	CHALLENGES	CONTINUOUS IMPROVEMENTS
<ul style="list-style-type: none"> <li>Reconnaissance barrier at 1915m</li> <li>Refuge chamber at 1858m</li> <li>Recovering main drift through Pit Bottom in Stone (PBIS) section</li> <li>Carrying out inspections only of PBIS roadways as we encounter them</li> </ul>	<ul style="list-style-type: none"> <li>Normal forensic work being undertaken as per plan</li> </ul>	<ul style="list-style-type: none"> <li>Recruiting two new mine workers</li> </ul>	<ul style="list-style-type: none"> <li>Continuing to sample and monitor products of combustion</li> </ul>	<ul style="list-style-type: none"> <li>Large debris field ahead</li> </ul>	<ul style="list-style-type: none"> <li>Independent contractor to conduct underground audit</li> </ul>
	▲ Tracking ahead of time	● Tracking on time	■ Delayed due to products of combustion found		

### Drift recovery progress



### Sequence of events timeline

