



# Bolting up

The Agency has moved to two shifts working underground, to work safely and efficiently in recovering the 2.3km drift access tunnel.

As of today, the reconnaissance barrier had been advanced to 395m. From around 300m to 500m up the drift geotechnical experts prescribed the installation of around 700 bolts to shore up the strength of the tunnel roof and ribs (tunnel walls).

A new type of resin bolt has been ordered - they are 35mm in diameter and 2.7m long, smaller than the current CT bolts in use. No grouting is required with the new bolts, which should arrive from Australia in the next few days.

Another improvement which will shortly be initiated is installing a percussion drifter on the Alfabs drill rig, which should drill through the rock more effectively than the current rotary drifter.



## PRRA | Working in partnership with the Pike River families Drift recovery progress and timeline status report

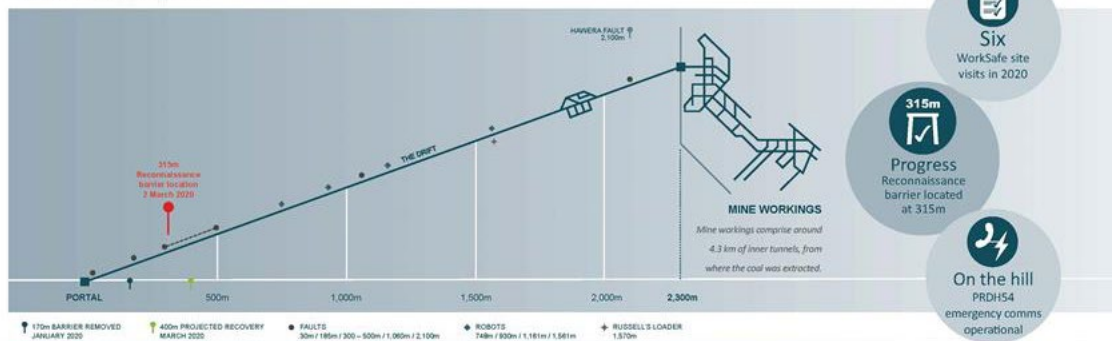
UPDATE ISSUED ON 2 MARCH 2020

### Progress and status

OPERATIONS	FORENSICS	PERSONNEL	CHALLENGES	CONTINUOUS IMPROVEMENTS
<ul style="list-style-type: none"> <li>Completed all roof bolting planned up to 335m</li> <li>PRDHS4 emergency comms operational</li> </ul>	<ul style="list-style-type: none"> <li>Reconnaissance barrier located at 315m mark</li> </ul>	<ul style="list-style-type: none"> <li>New mine workers have completed inductions</li> <li>Clarke rig training completed</li> </ul>	<ul style="list-style-type: none"> <li>Ground support installation challenging due to required hole diameter size of CT bolts and the effects on equipment</li> </ul>	<ul style="list-style-type: none"> <li>Complete planned bolting 200 – 335m</li> <li>Introduce Proxim resin bolts</li> <li>Install percussion drifter on drill rig</li> </ul>

▲ Tracking ahead of time    ● Tracking on time    ■ Tracking delayed due to extenuating circumstances

### Drift recovery progress



### Sequence of events timeline



Visit the Pike River Recovery Agency [website](#) for the latest drift recovery progress reports.

---

## Read all about it...

The latest correspondence between WorkSafe and the Agency is available in the Documents section of the Agency website. Weekly technical schedules also posted in the Documents section outline the activities planned and completed at the Pike River Mine site.

[Frequently Asked Questions](#) are available on the Te Kāhui Whakamana Rua Tekau mā Iwa - Pike River Recovery Agency website.

If you want to ask something specific, email us at [info@pikeriverrecovery.govt.nz](mailto:info@pikeriverrecovery.govt.nz). Please direct any media queries to [media@pikeriverrecovery.govt.nz](mailto:media@pikeriverrecovery.govt.nz).

Ngā mihi,

The Pike River Recovery Agency team

---



 Tweet

 Forward

Email: [info@pikeriverrecovery.govt.nz](mailto:info@pikeriverrecovery.govt.nz)

Phone: +64 3 966 9210

Write: PO Box 414, Greymouth 7840

Fax: +64 3 966 9230

Physical address: Unit 3, 36-46 Tainui Street, Greymouth 7805

[Preferences](#) | [Unsubscribe](#)